

# MONTHLY MEMBERSHIP PROGRESS REPORT

District 318 D

Results as of: 1/31/2020

GMT:

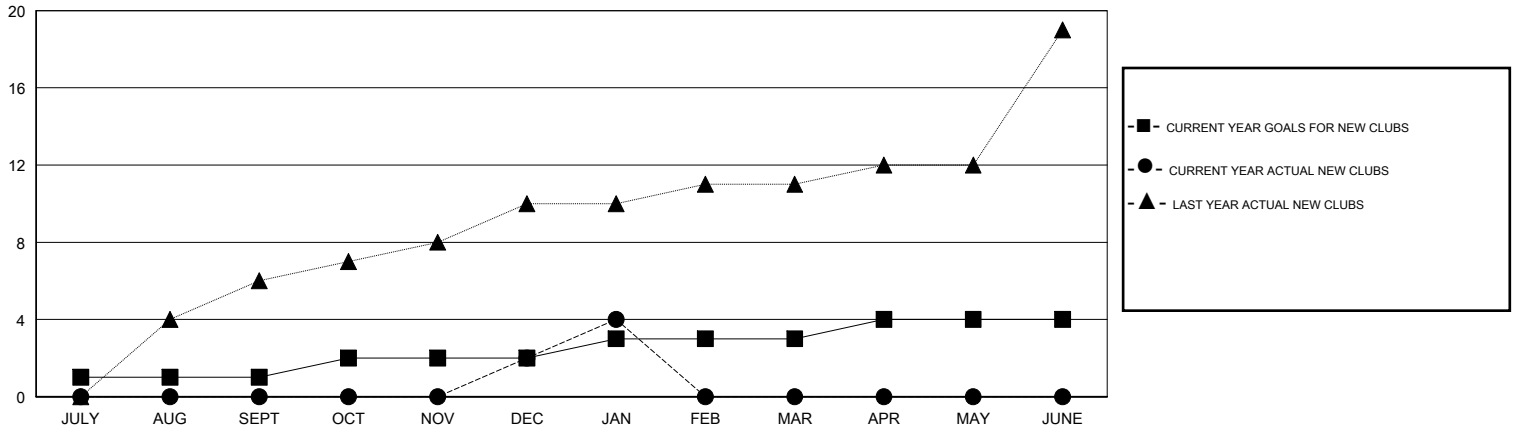
LOCATION INDIA

GMT CA

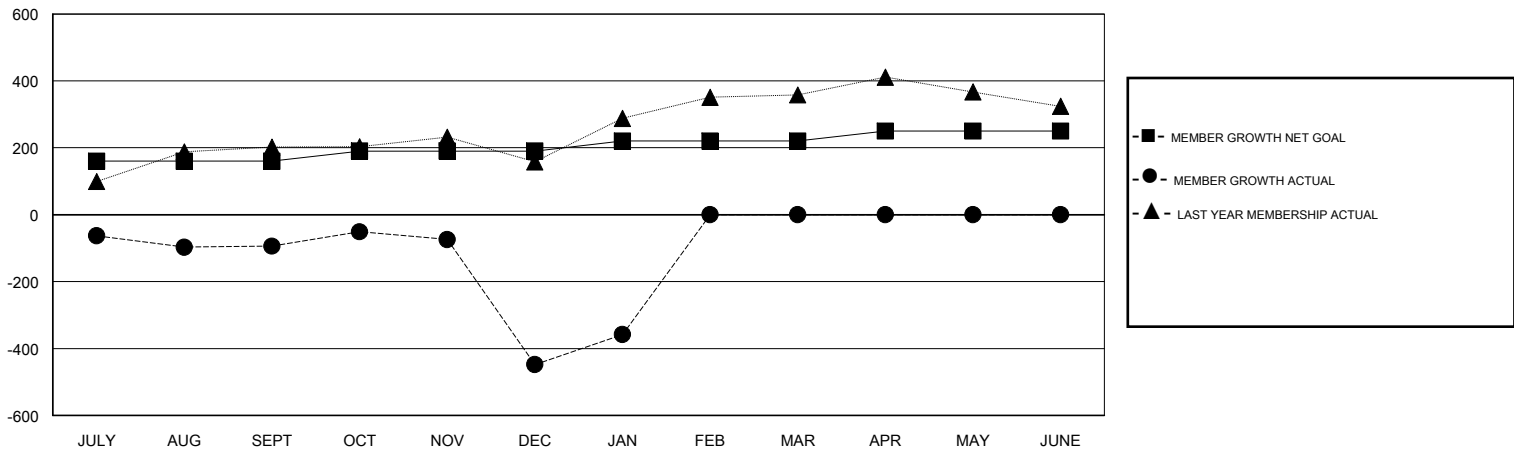
Clubs			
RESULTS FOR 2019-2020			
QUARTER	NEW CLUB GOAL	NEW CLUBS	DROPPED CLUBS
JULY/AUG/SEPT	1	0	0
OCT/NOV/DEC	1	2	14
JAN/FEB/MAR	1	2	0
APR/MAY/JUNE	1	0	0

Members			
RESULTS FOR 2019-2020			
QUARTER	MEMBER GROWTH NET GOAL	MEMBER GROWTH ACTUAL	DROPPED MEMBERS ACTUAL (including transfers)
JULY/AUG/SEPT	160	74	164
OCT/NOV/DEC	30	167	518
JAN/FEB/MAR	30	192	49
APR/MAY/JUNE	30	0	0

GOALS AND ACTUAL NEW CLUBS CUMULATIVE



GOALS AND ACTUAL MEMBERS CUMULATIVE



DROPPED CLUBS: 14	94 CLUBS OF 164 ADDED 1 OR MORE NEW MEMBERS	<b>GENDER DISTRIBUTION</b> MALE 4,672 (82.34%) FEMALE 1,002 (17.66%)
<b>DROPPED MEMBERS</b> DECEASED 13 CLUB CANCELLED 269 OTHER 449 <hr/> TOTAL 731	<a href="#">CLICK HERE FOR CUMULATIVE MEMBERSHIP DATA</a>	TOTAL FAMILY UNIT MEMBERS 1,618 FAMILY MEMBERS PAYING HALF DUES 863